

Seminar ESPON – SPIMA

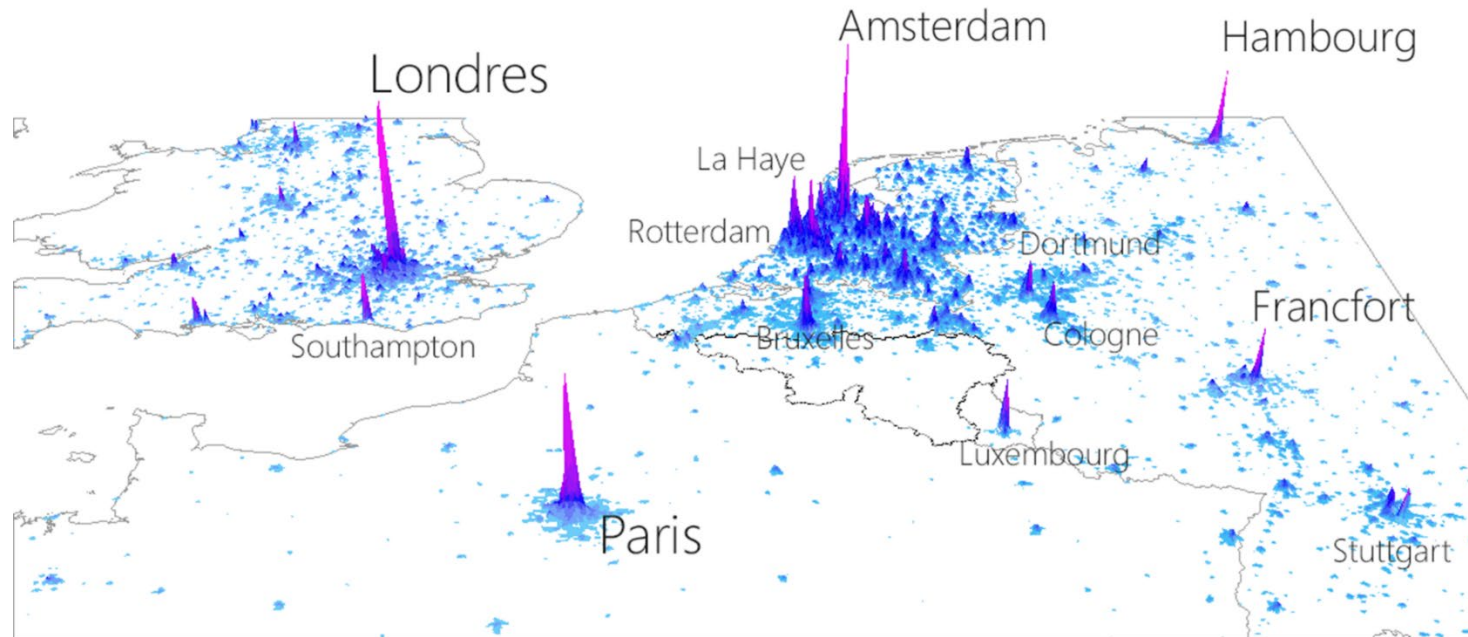
Brussels 02.04.2019

Alain Malherbe – CREAT – LOCI – UCLouvain

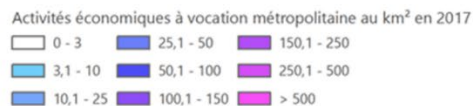
Structure:

1. The influence of metropolitan centres outside Wallonia
2. Wallonia's strategies to integrate metropolitan dynamics
3. Conclusions

Wallonia in the North Western Europe



Densité d'activités économiques à vocation métropolitaine
à l'échelle de l'Europe du Nord-Ouest

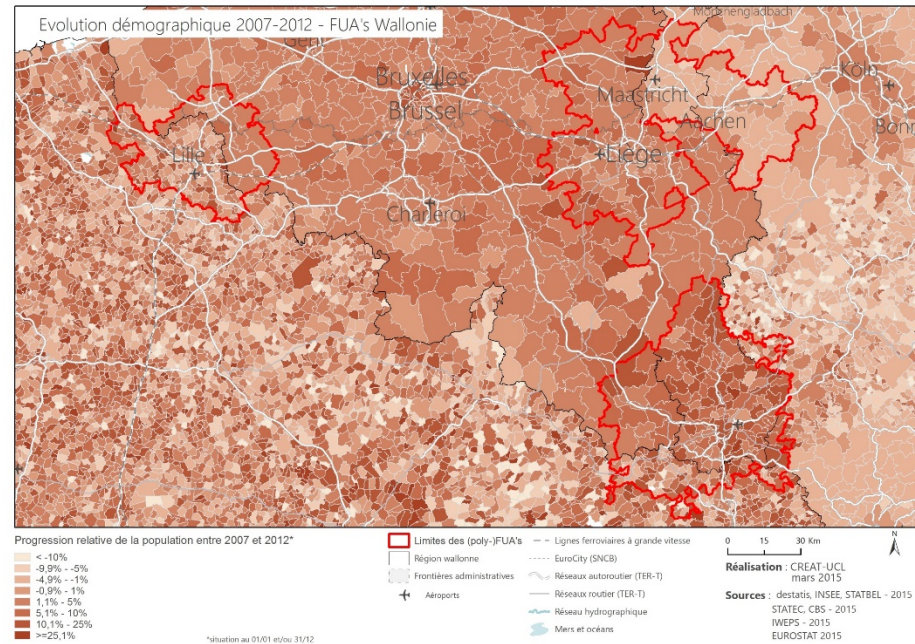
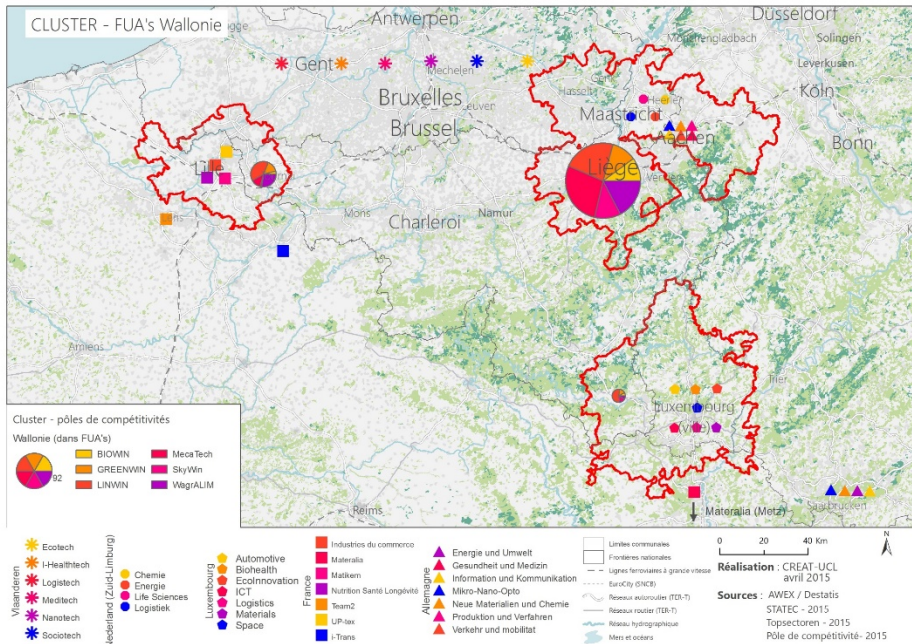


Réalisation : CPDT
juin 2017

Sources : AMADEUS 2017 (Van DIJK)
CORINE LANDCOVER v16
CREAT-UCL 2017

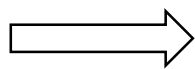
Metropolitan economic activities density (CPDT – CREAT UCLouvain, 2017)

Dynamics in the Wallonia's cross-border metropolitan FUA's



Competitive centers in the transfrontier FUA's transfrontalières (CPDT – CREAT UCLouvain, 2015)

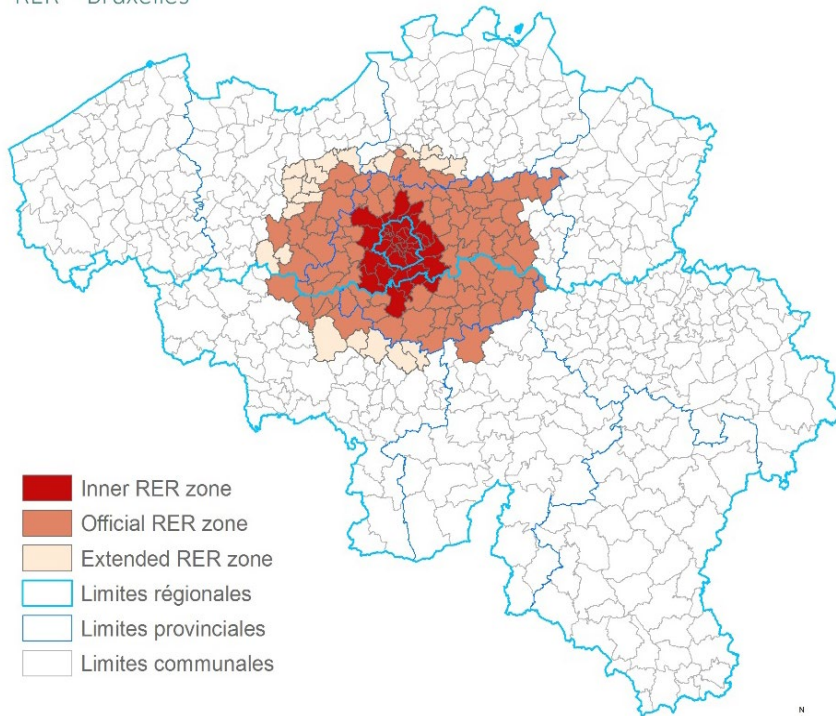
Demographic evolution in the transfrontier FUA's between 2007 and 2012 (CPDT – CREAT UCLouvain, 2015)



- Dynamism in the cross-border metropolitan FUA's
- Different intensity depending on functional relations

Interdependencies Brussels metropolitan Area

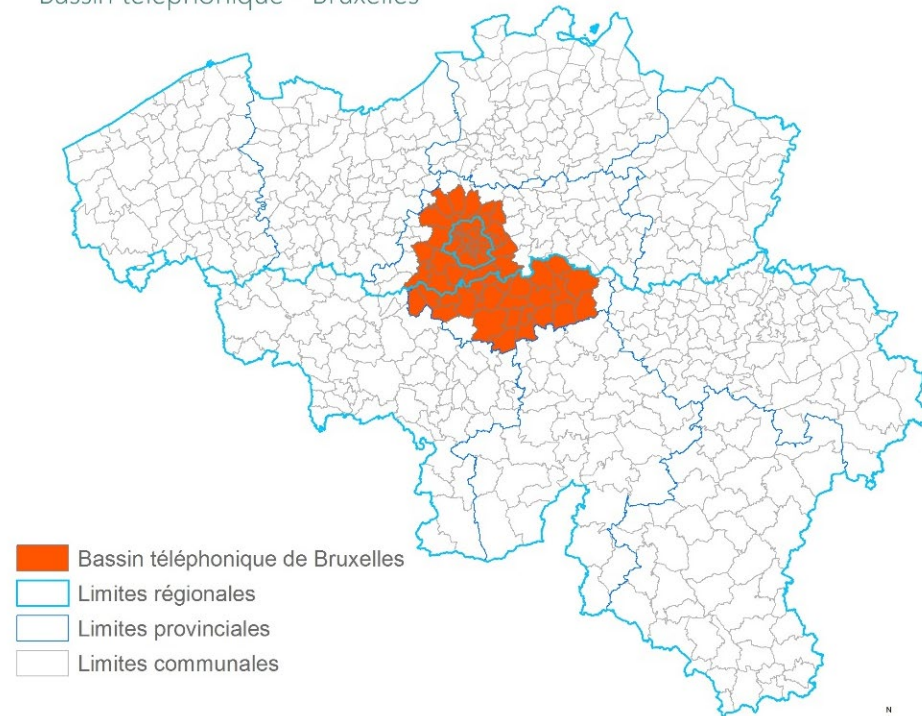
RER - Bruxelles



- Inner RER zone
- Official RER zone
- Extended RER zone
- Limites régionales
- Limites provinciales
- Limites communales

Sources : Réseau Express Regional

Bassin téléphonique - Bruxelles



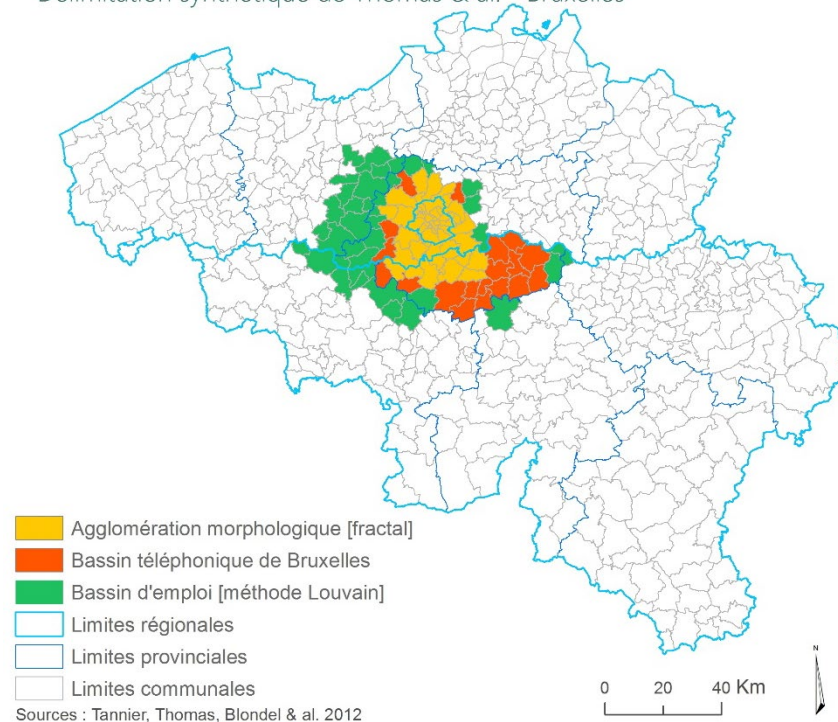
- Bassin téléphonique de Bruxelles
- Limites régionales
- Limites provinciales
- Limites communales

Sources : Origin-Destination (OD) matrix of mobile phone communications sur base des travaux de Blondel et al, 2010 [UCL]

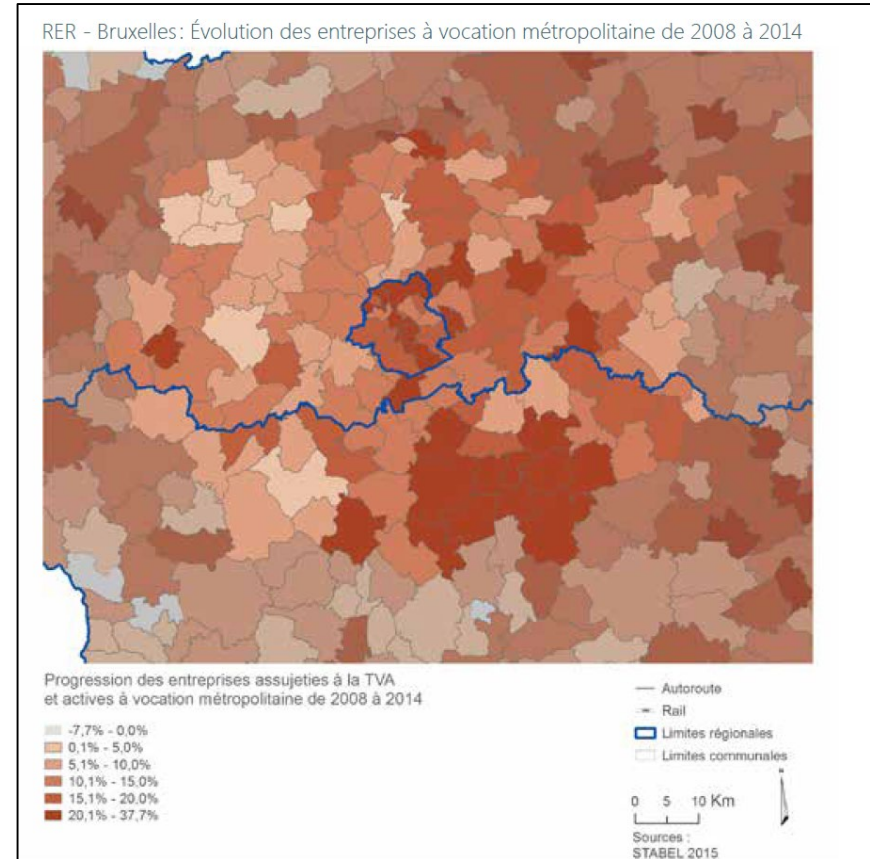
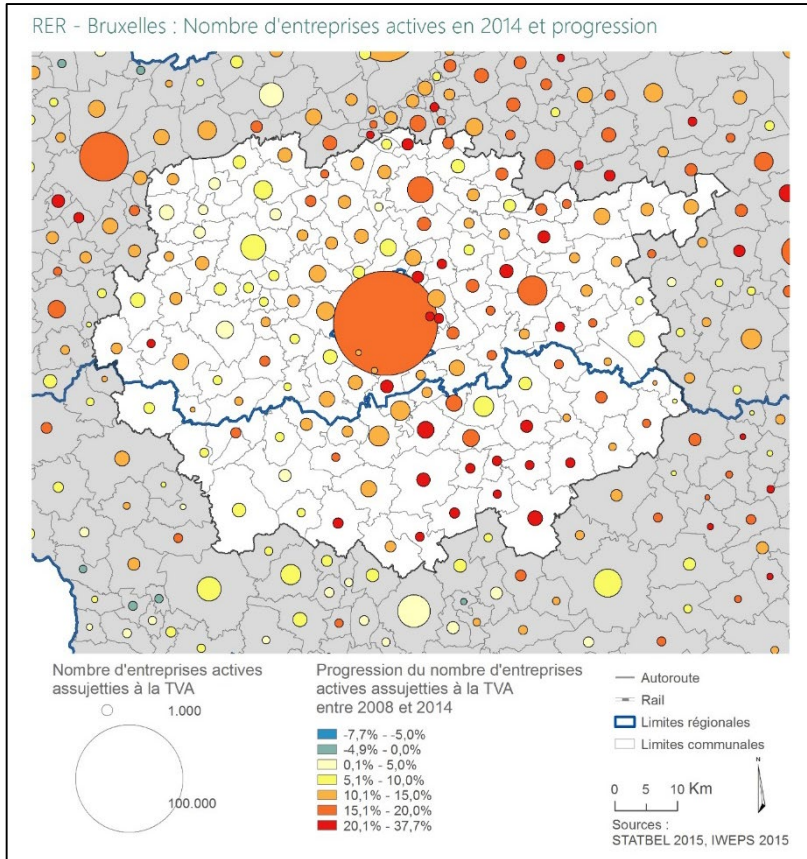
RER area & Phones' influence area for Brussels (CPDT – CREAT UCLouvain, 2015, sources RER et Blondel & al., 2012)

Interdependencies Brussels metropolitan Area

Délimitation synthétique de Thomas & al. - Bruxelles

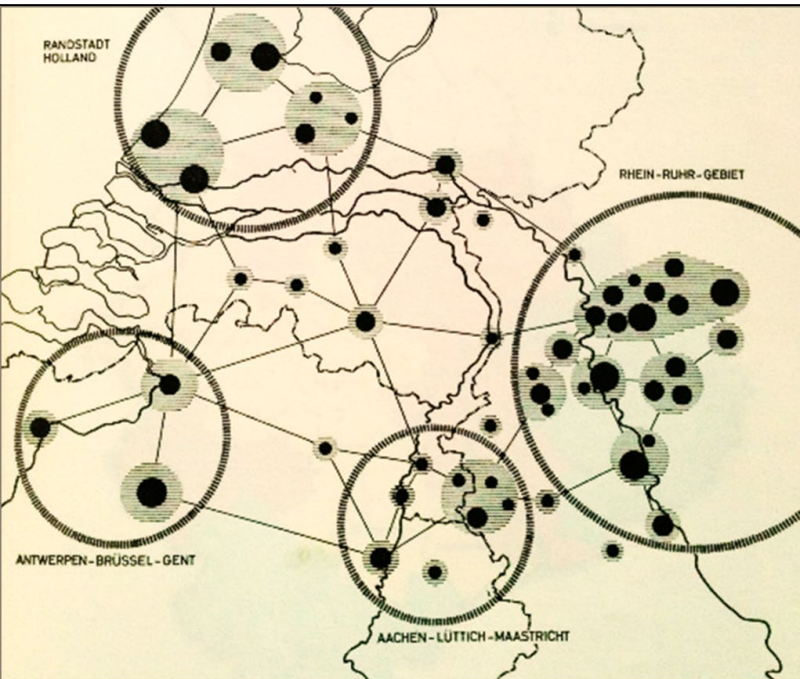


*Addition of the Morphologic, Workforce & Phones' influence areas for Brussels
(CPDT – CREAT UCLouvain, 2015, source Blondel & al., 2012)*

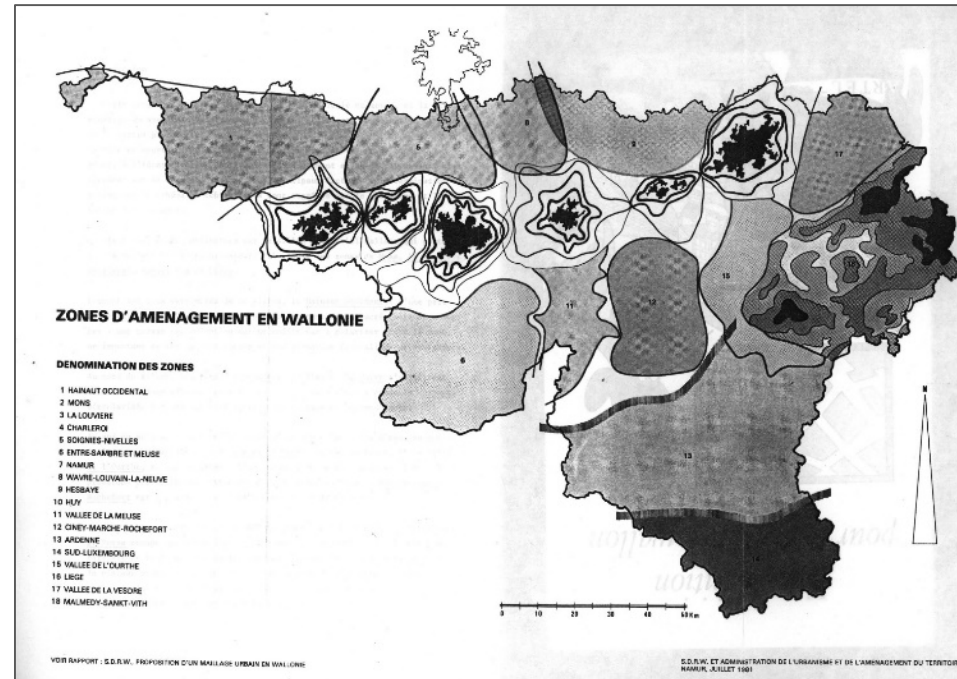


*Companies and metropolitan Firms in the RER area: Evolution between 2008 and 2014
(CPDT – CREAT UCLouvain, 2015)*

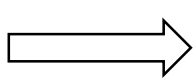
From industrial centers to metropolitan poles



Four agglomerations in the North Western European Area in 1964

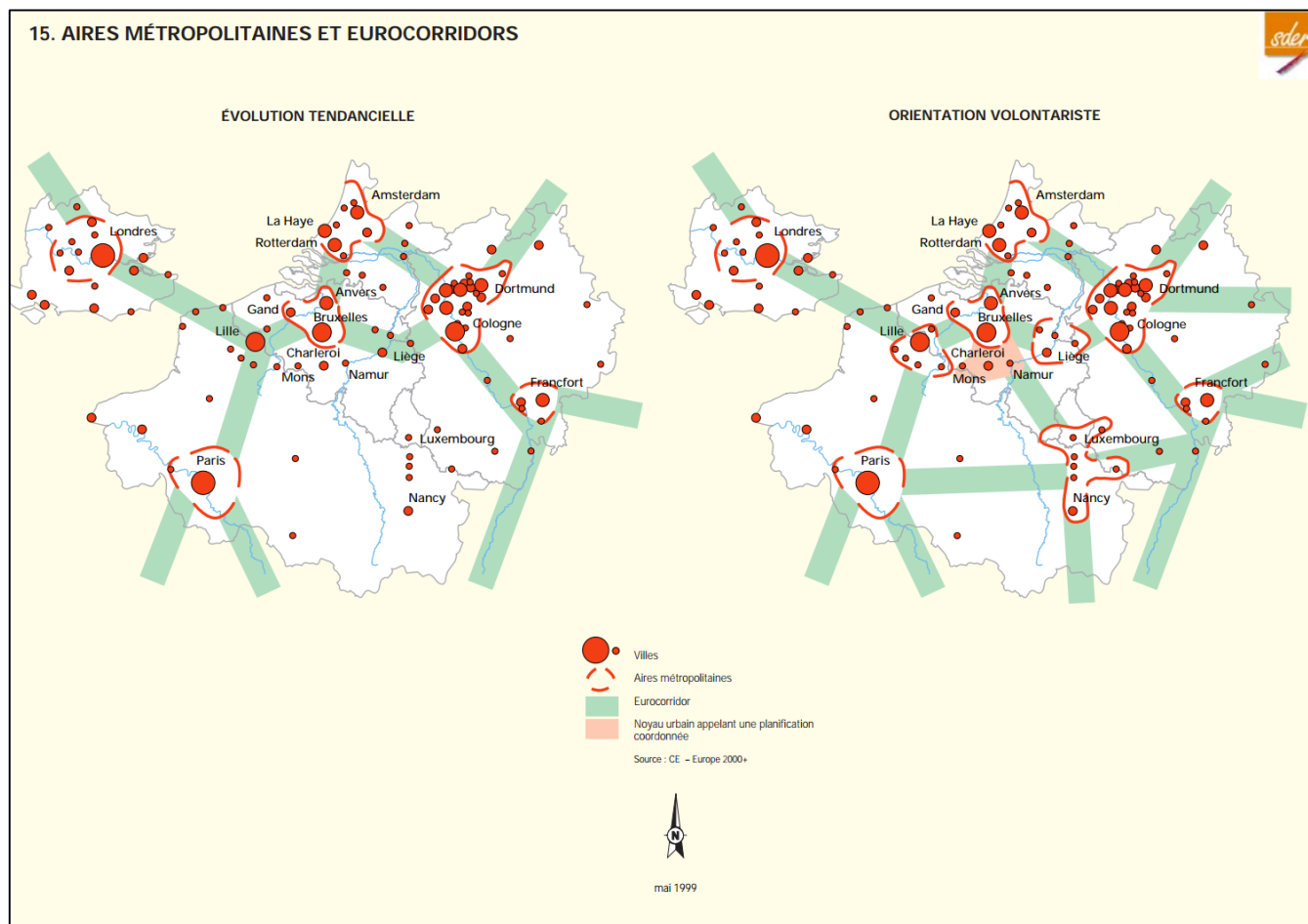


PRATW's draft (1976-1994) – 'Polyville' concept



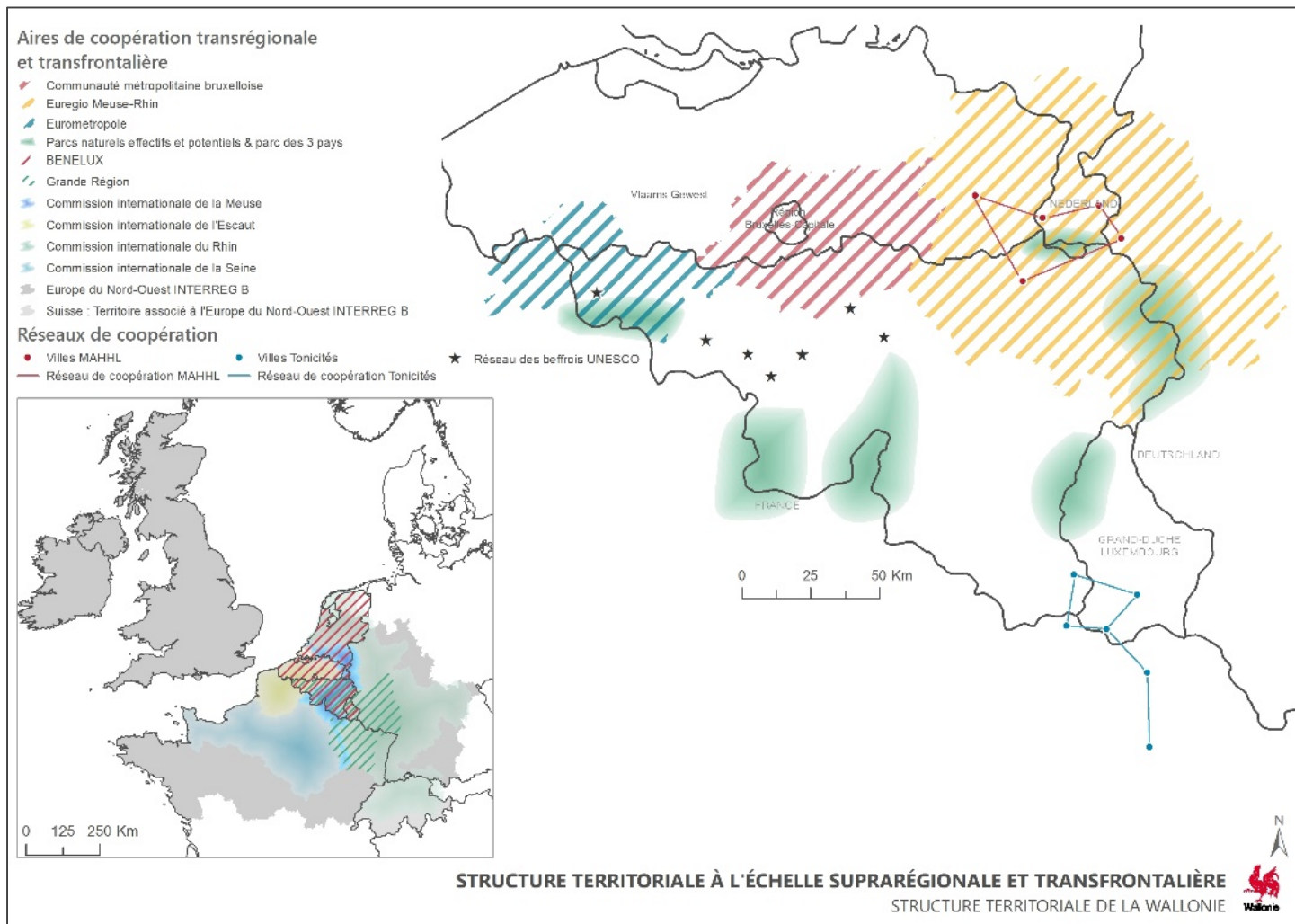
Endogeneous development strategies built upon former industrial centers

Le Schéma de Développement de l'Espace Régional (SDER 1999)

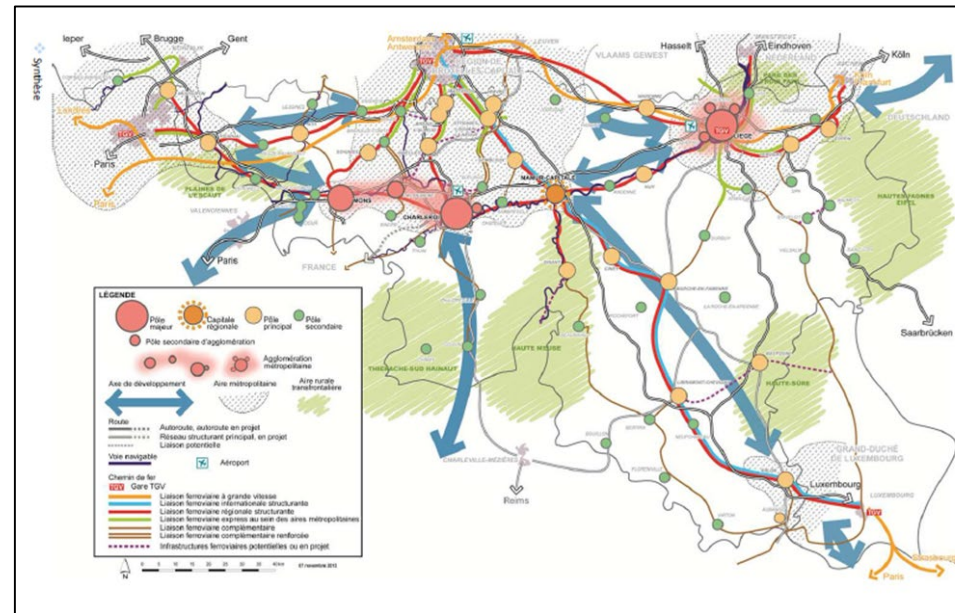
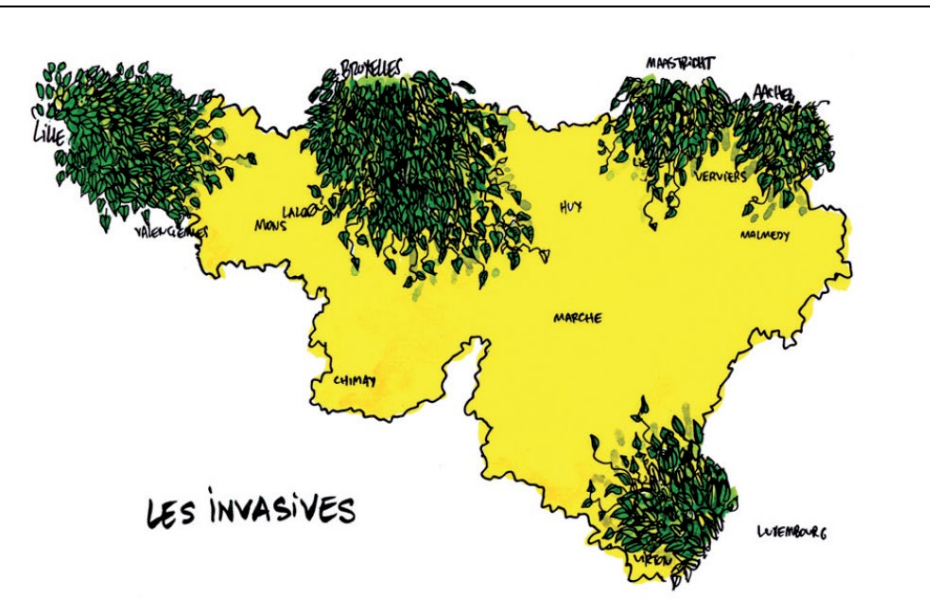


- ➔
- Trans-European Transport Network Integration (Eurocorridor)
 - Maximizing positive impacts of metropolitan areas' development

Cross-border and transregional cooperations



SDER draft, 2013

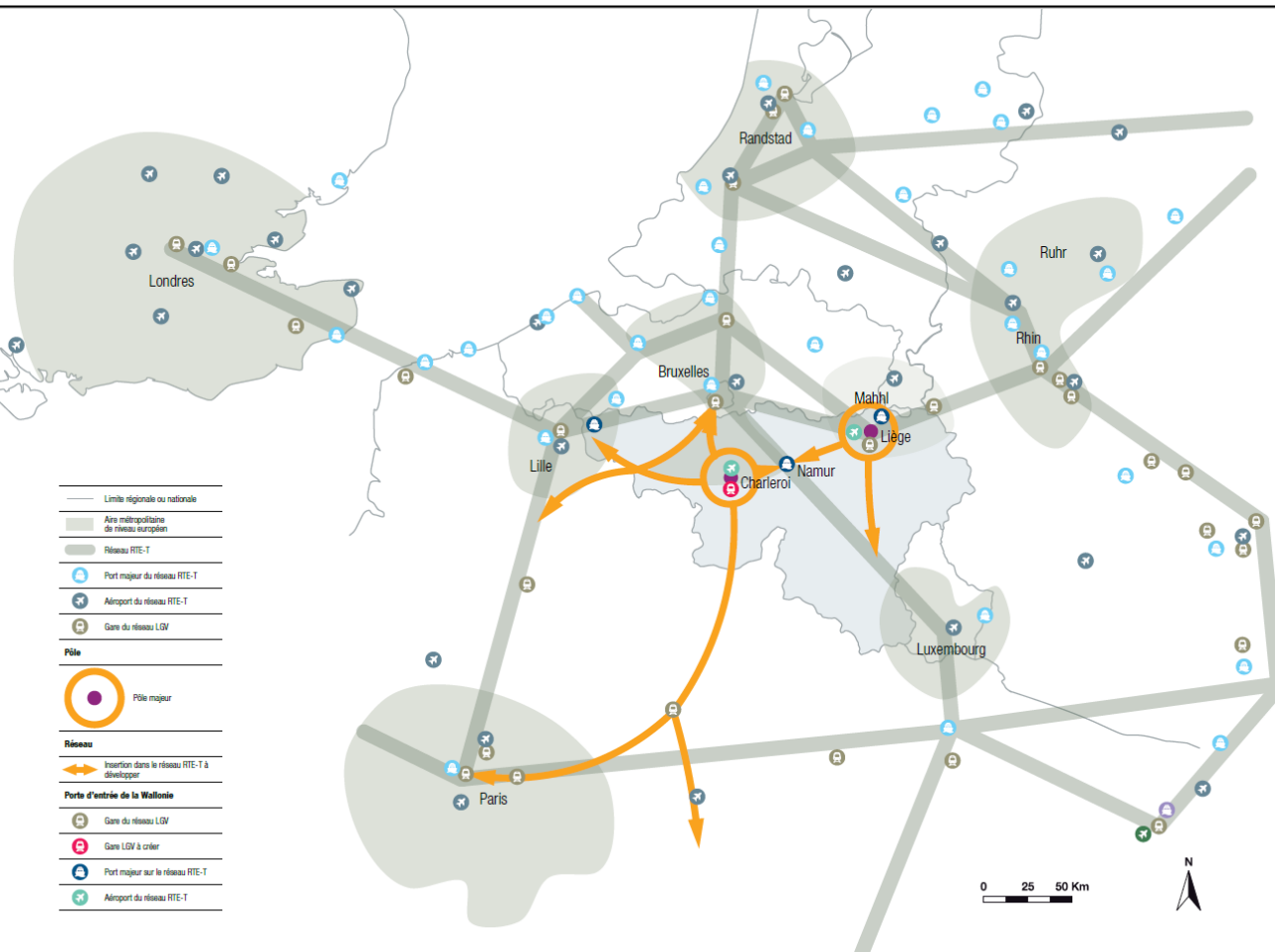


One of the fourth prospective development possible in 2040 (Institut Destrée – P. Kroll)

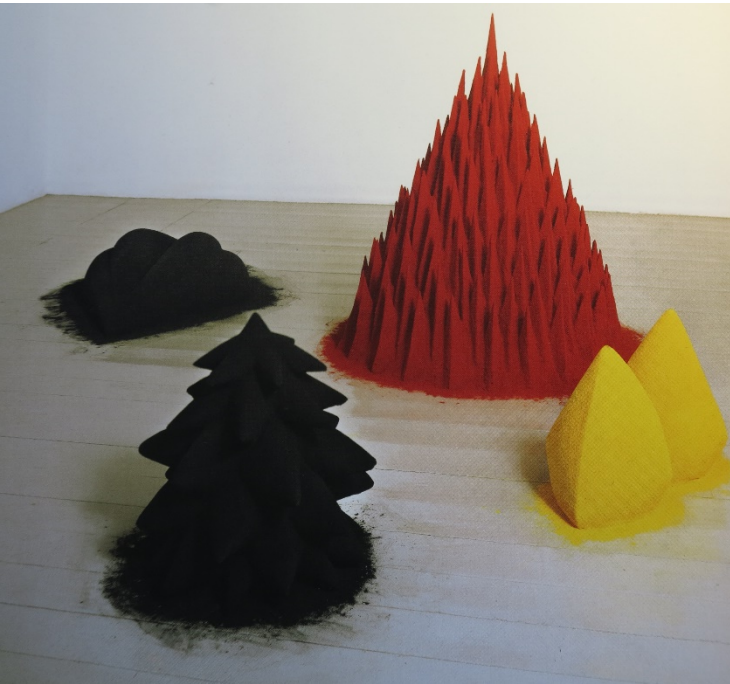
Structure territoriale de la Wallonie (SDER – 2013)

- 4 metropolitan centres (Brussels, Liège, Lille, Luxembourg) with Liège's consolidation within its metropolitan area ;
- Intensification of the metropolitan centres Mons – La Louvière – Charleroi's influence ;
- 4 metropolitan areas : Central Area (Bruxelles II Mons – La Louvière – Charleroi) ; Eastern Area (Liège's consolidation as a metropolitan pole) ; Western Area (Lille II Tournai) ; Southern Area (Luxembourg II Arlon) ;
- Acknowledgment that metropolitan centre represent development but create also negative externalities.

Schéma de Développement Territorial draft 2019



- Strengthening Wallonia's integration in the International Network through its continental gateways (harbours and airports) ;
- Enhancement Wallonia's territorial assets ;
- Taking advantage from the metropolitan areas ;
- Connecting Wallonia within the European Communication Network ;
- Consolidating Liège, Charleroi and Namur attractiveness



Anish Kapoor, Six Secret Places, 1983

How can we compensate the lack of Metropolises in Wallonia ?

- Integrate through Communication Network;
- Strengthen links between Wallonia and the metropolitan centres (through gateways) ;
- Balance Brussels' metropolitan area ;
- Manage negative externalities from the metropolitan areas (Luxembourg, Brussels) ;
- Integrate Liège and Charleroi within the metropolitan dynamics ;
- Tournai's positioning in tourism, heritage, leisure, and Quarries.